

ADAPTERS, BETWEEN SERIES DC - 12.4 GHz TYPE N / SMA BULKHEAD MOUNT



MODELS: 5293, 5294

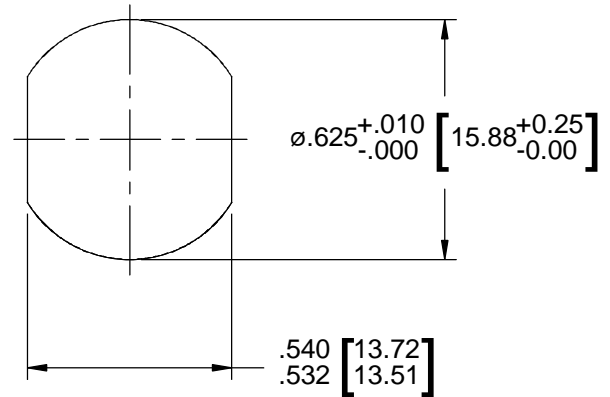
SPECIFICATIONS:

Electrical:

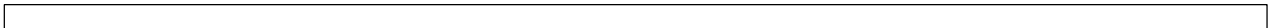
Frequency Range _____ DC - 12.4 GHz
 VSWR _____ 1.20:1 Max.
 Impedance _____ 50 Ohms
 Operating Temp Range _____ -45°C to +120°C

Mechanical:

Connectors _____ Passivated Stainless Steel
 (Mates with MIL-STD-348)
 Conductors _____ Gold Plated Beryllium Copper

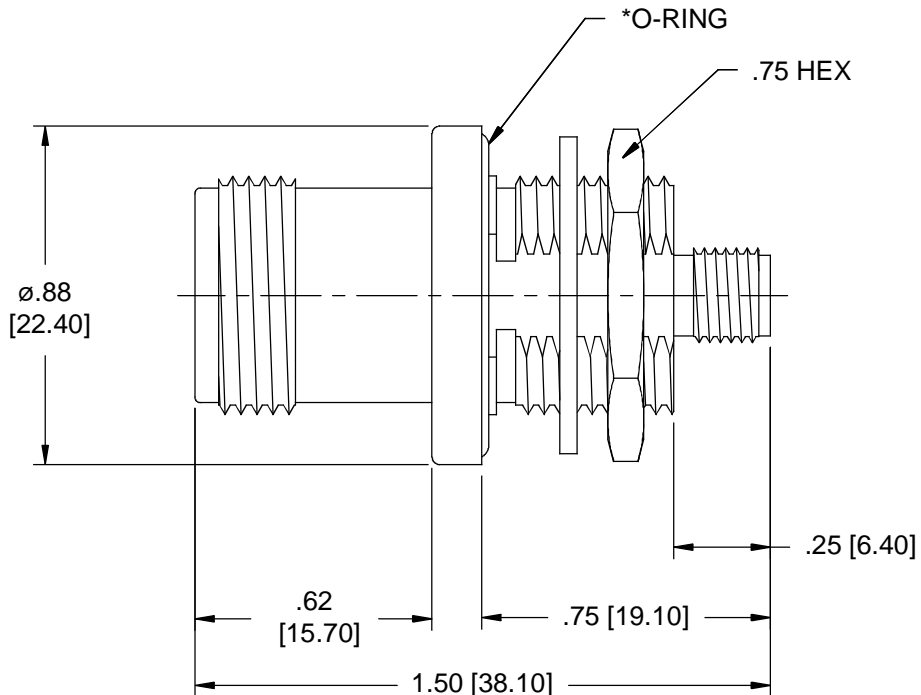


Recommended Panel Configuration



Model Number: **5293**
 Type N Female / SMA Female
 No O-Ring Included

Model Number: **5294**
 Type N Female / SMA Female
 *Includes O-Ring



Note: Dimensions in Brackets are Expressed in Millimeters and are for Reference Only.
 Design specifications are subject to change without notice.
 Contact factory for technical specifications before purchasing or use.

5293; REV A