

Surface Mount Hi-Rel Space EMI Filters

Expanded PSM series to include more stringent levels of testing by employing higher grade of dielectric materials to facilitate military and space applications.

Features

- Voltage rating from 200VDC/130 AC, 400 Hz, 700 DWV, -55 - 125°C
- Current rating
 - Feedthrough: 15 Amps max
 - Pi: 10 Amps max
- Capacitor TC=X7R (BR), DF 4% max.
- Integrates MIL-PRF-28861 design considerations
- Extended thermal shock and voltage conditioning
- Space-saving, compact design with secured ferrite (Pi circuits)
- Provides time and cost saving compared to through-hole filters



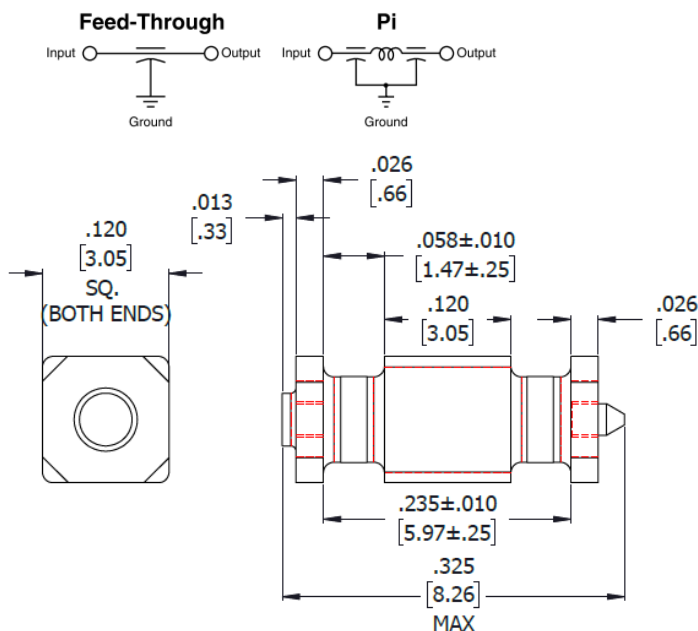
Hi-Rel



Space Grade

Applications

- Satellite systems
- Aircraft systems
- Defense systems
- Space ground transmitter receiver controllers
- Space applications
- Launch vehicles
- Ground communication & networks



Electrical Specifications

Typical Insertion Loss in a Shielded filter installation

PSM1 Pi Circuit

	130VAC/200VDC 10A max	Frequency (MHz)						
		Cap Value/Tol	10	30	50	100	300	500
PSM1SG-101M-10T0	100 pF±20%	-	2	3	5	12	22	30
PSM1SG-102M-10T0	1000 pF±20%	5	13	19	29	32	30	30
PSM1SG-152M-10T0	1500 pF±20%	6	15	24	38	52	50	50
PSM1SG-252M-10T0	2500 pF±20%	11	26	36	50	55	50	50

PSM4 C Circuit

	130VAC/200VDC 15A max	Frequency (MHz)						
		Cap Value/Tol	10	30	50	100	300	500
PSM4R-101M-15T0	100 pF±20%	-	-	3	8	18	28	30
PSM4R-102M-15T0	1000 pF±20%	3	11	15	23	30	32	30
PSM4R-152M-15T0	1500 pF±20%	5	15	20	25	30	32	30
PSM4R-252M-15T0	2500 pF±20%	9	19	22	28	32	32	40

Notes

Terminations: Hi-rel – silver finish; Space grade – gold finish
Other circuit component values available