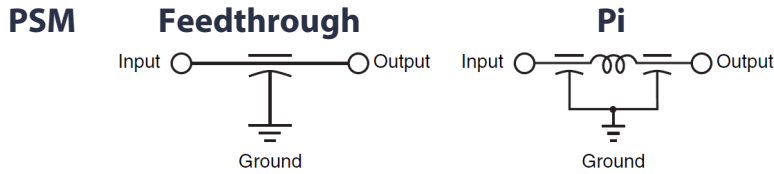
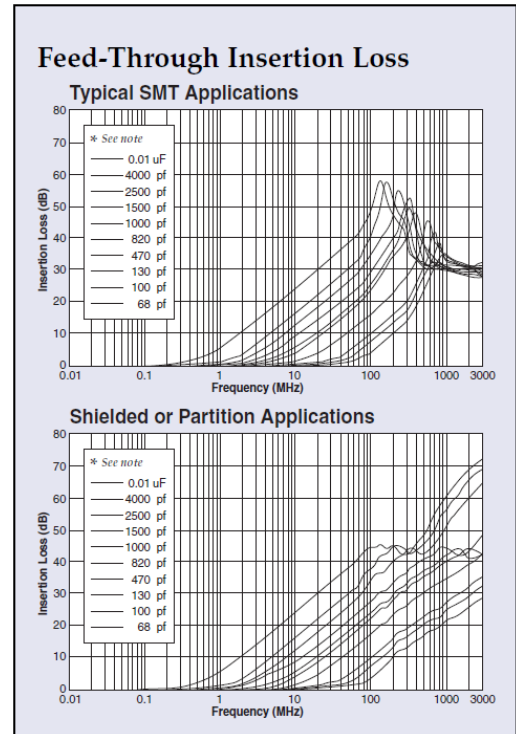
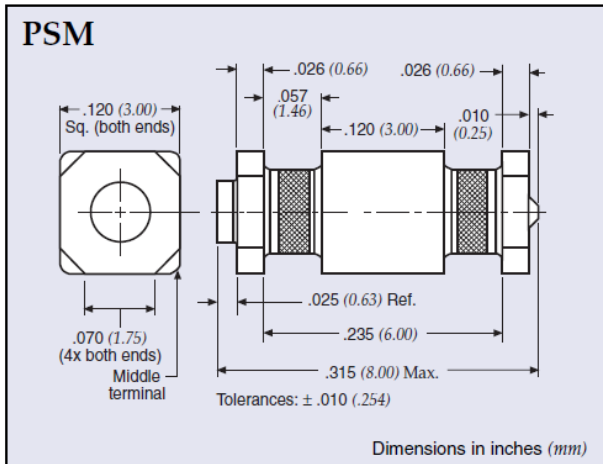


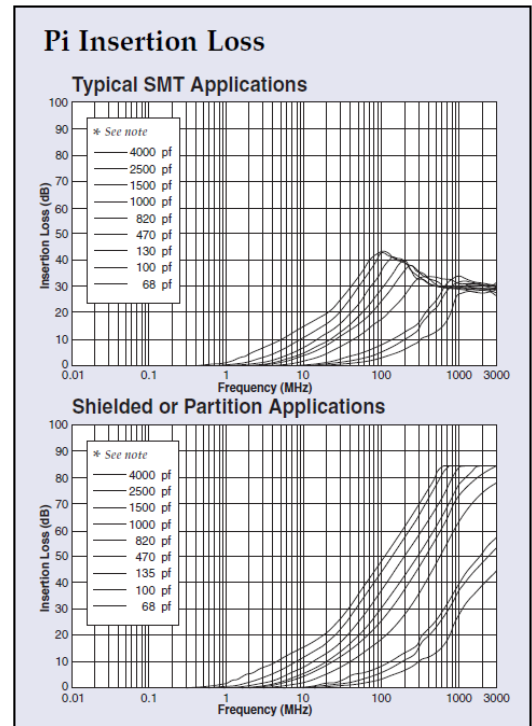
# Power Surface Mount Filters



Voltage Rating DC	200 VDC @ -55°C to +125°C
DWV	700 VDC
Current Rating	20 Amps (Feedthrough) max. 10 Amps (Pi) max.
Insulation Resistance	1.0 GΩ @ 25°C
Dissipation Factor	4.0% maximum
D.C.R	Max. .0005Ω, typ. .0002Ω



\* Capacitance values for insertion loss curves are displayed left to right in the order shown.



## Power Surface Mount Filters

### PSM Ordering Information

Example: PSM4-402Z-20T0

<b>PSM</b>	<b>4</b>	<b>402Z</b>	<b>20</b>	<b>T</b>	<b>0</b>
Style	Circuit Configuration	Capacitance	Current Rating	Packaging	Tape and Reel
PSM (Power)	1 - Pi 4 - Feedthrough		10 - 10 Amps (Pi) 20 - 20 Amps (Feedthrough)	T - Tape and reel packaging B - Bulk packaging	0 - 500 pieces 2 - 2,000 pieces <i>Note: Tape and reel packaging - 500 pieces (7") and 2,000 pieces (13")</i>

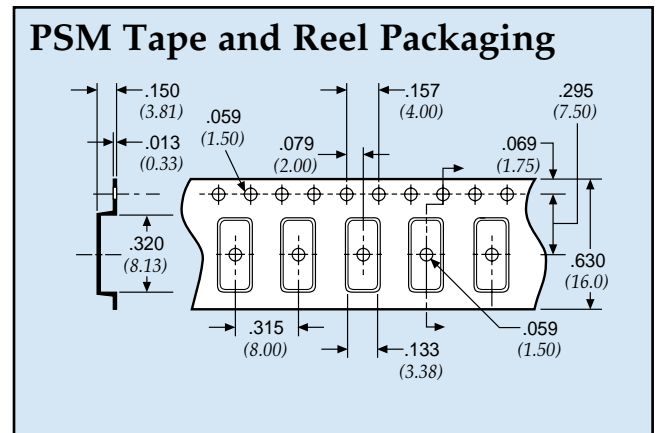
  

Code	Value*	Tolerance
680M	68 pF	±20%
101M	100 pF	±20%
102M	1000 pF	±20%
252P	2500 pF	+100/-0%
402Z	4000 pF	+80/20%
103Z**	.01 μF	+80/-20%

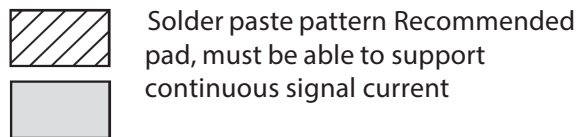
\*Other capacitance values available as special order.  
\*\*Available in feedthrough circuit only.

### Technical Notes

- Soldering recommendations supplied upon request
- Reflow temperature limit is 260°C
- Unit weight is approximately 0.4 grams



### PSM Recommended Board Pattern



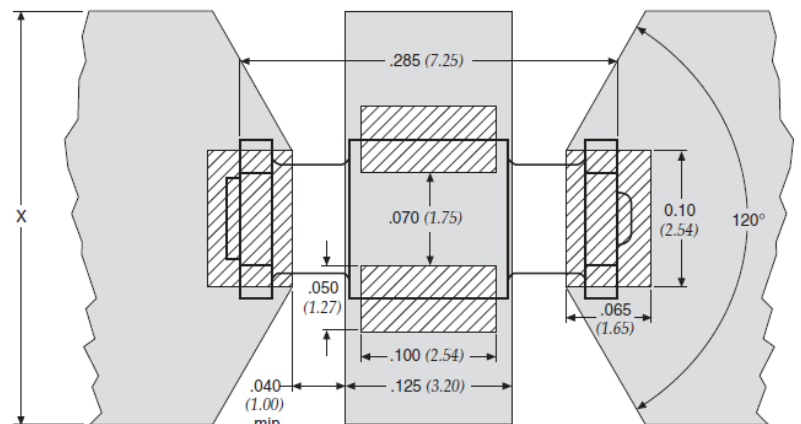
#### 20 Amps Feedthrough

X = 0.350" minimum for 1 oz. copper (0.036 mm thickness)

X = 0.200" minimum for 2 oz. copper (0.071 mm thickness)

#### 10 Amp Pi

X = 0.130" minimum for 1 oz. copper (0.036 mm thickness)



Dimensions in inches (mm)