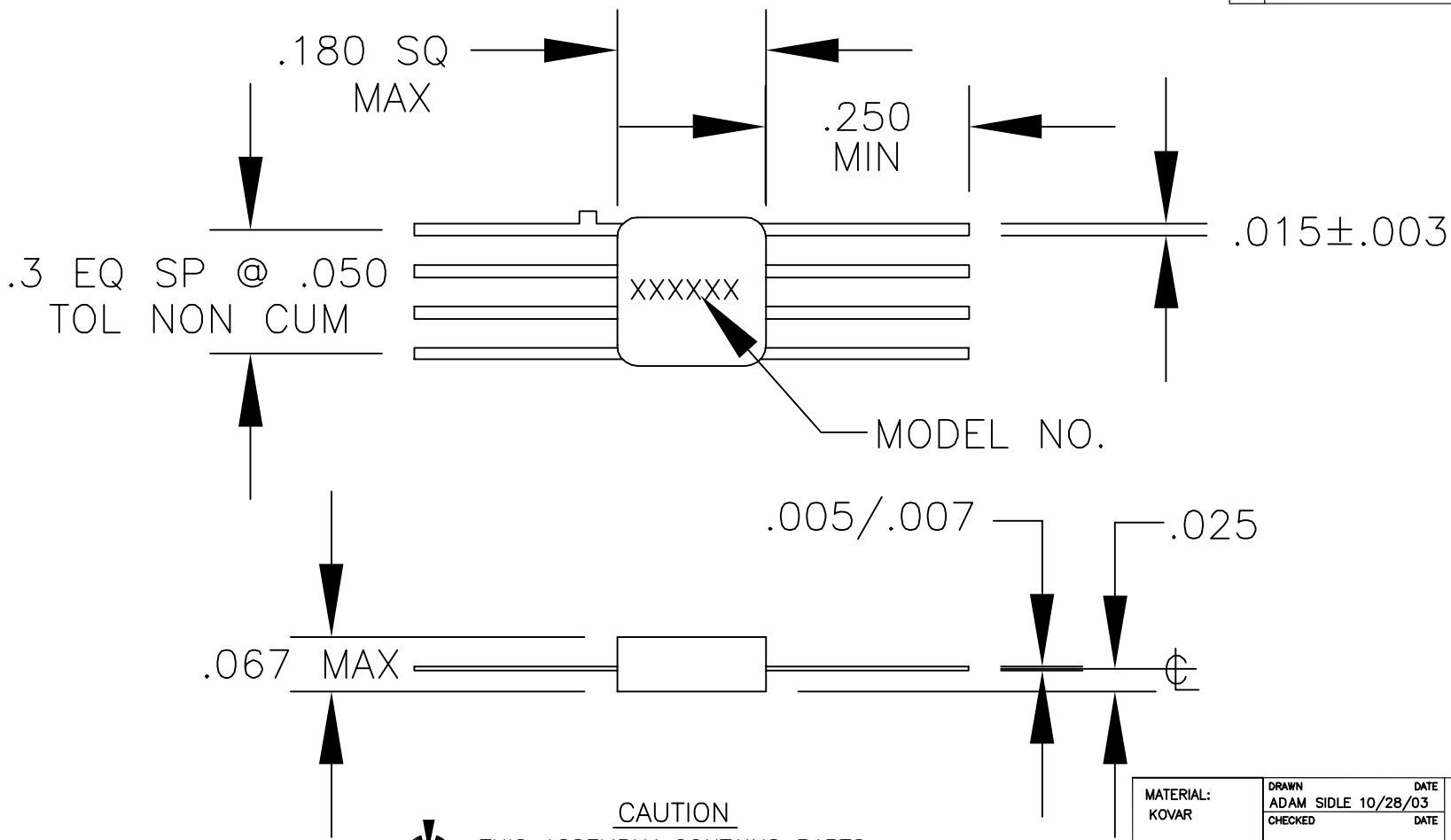


OTL_042

REVISIONS

LTR	DESCRIPTION	DATE	APPROVED
-	ECN 12429, RELEASE	10/29/03	



CAUTION

THIS ASSEMBLY CONTAINS PARTS SENSITIVE TO DAMAGE BY ELECTRO-STATIC DISCHARGE (ESD). USE ESD PRECAUTIONARY PROCEDURES WHEN TOUCHING, REMOVING OR INSERTING.

MATERIAL: KOVAR	DRAWN ADAM SIDLE 10/28/03	DATE
	CHECKED	DATE
FINISH: NICKEL/GOLD	ENGINEERING	DATE
	MANUFACTURING	DATE
DIMENSIONS: INCHES	QUALITY	DATE
TOLERANCE		
DEC. .XX +/- .01		
DEC. .XXX +/- .005		
ANG .X DEG		



PHILADELPHIA OPERATIONS
2707 BLACK LAKE PLACE
PHILADELPHIA PA 19154 (USA)

OUTLINE DRAWING
FP7

CODE IDENT NO. 60979	ABY 23100042
K:\ENG\ACTWIN\OUTLINE\23100042	SHT 1 OF 1