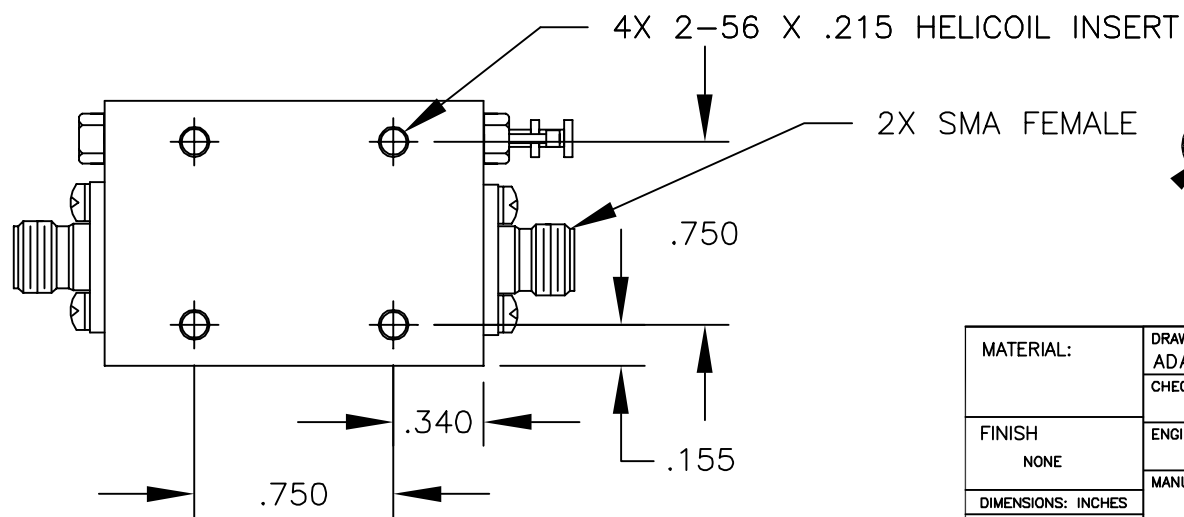
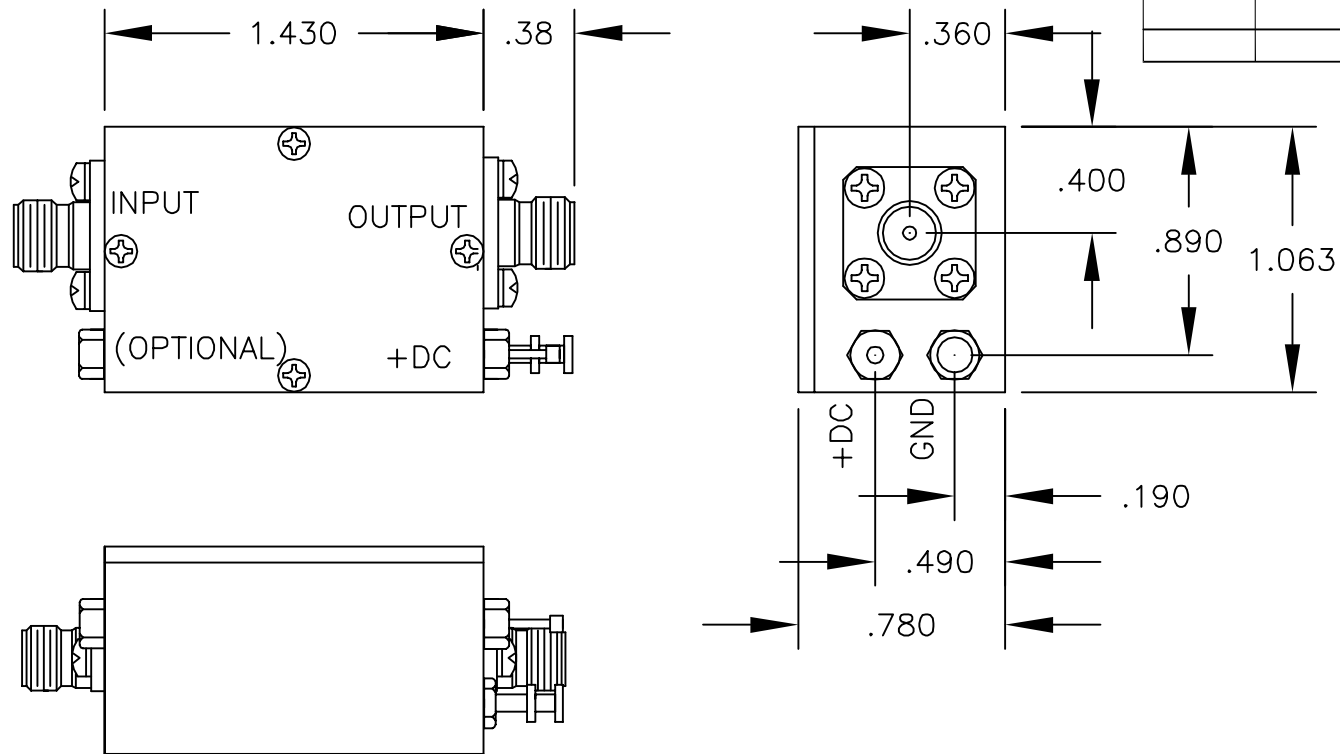


OTL_H3

REVISIONS

LTR	DESCRIPTION	DATE	APPROVED



CAUTION



THIS ASSEMBLY CONTAINS PARTS SENSITIVE TO DAMAGE BY ELECTRO-STATIC DISCHARGE (ESD). USE ESD PRECAUTIONARY PROCEDURES WHEN TOUCHING, REMOVING OR INSERTING.

MATERIAL:	DRAWN	DATE	2707 BLACK LAKE PLACE, PHILADELPHIA PA. 19154
	ADAM SIDLE	8/27/02	
FINISH NONE	CHECKED	DATE	OUTLINE DRAWING H3
	ENGINEERING	DATE	
DIMENSIONS: INCHES TOLERANCE	MANUFACTURING	DATE	
	QUALITY	DATE	
DEC. .XX +/- .01			
.XXX +/- .005			
ANG .X DEG			