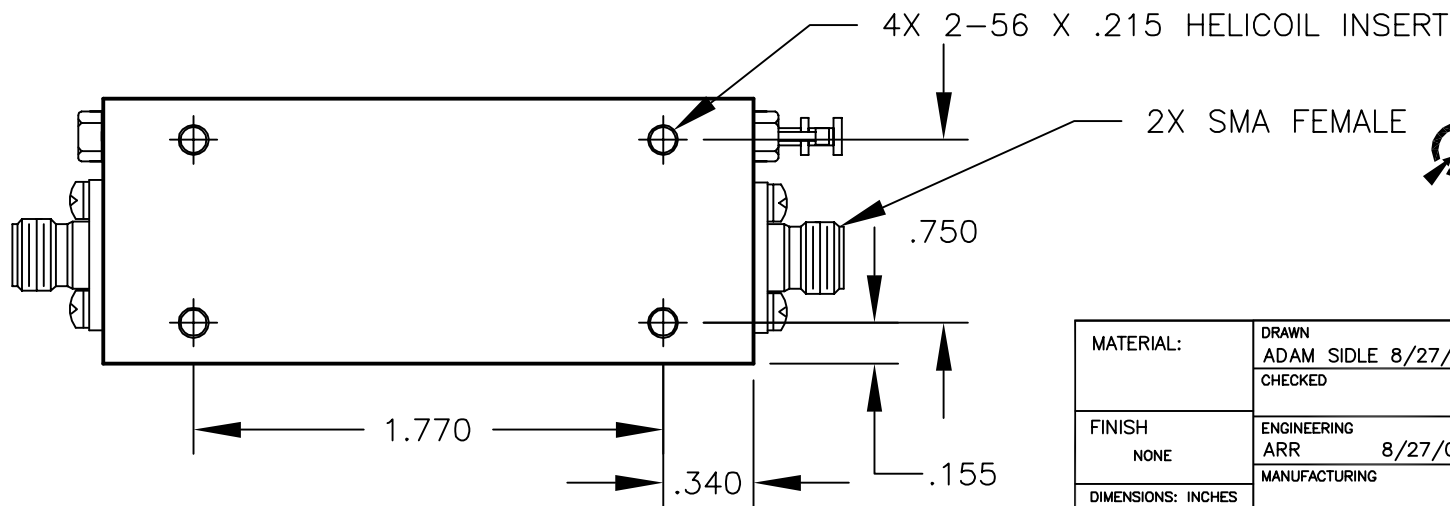
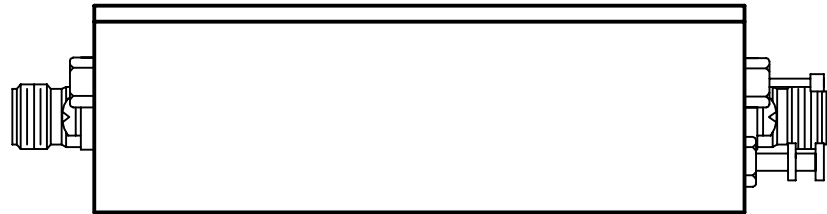
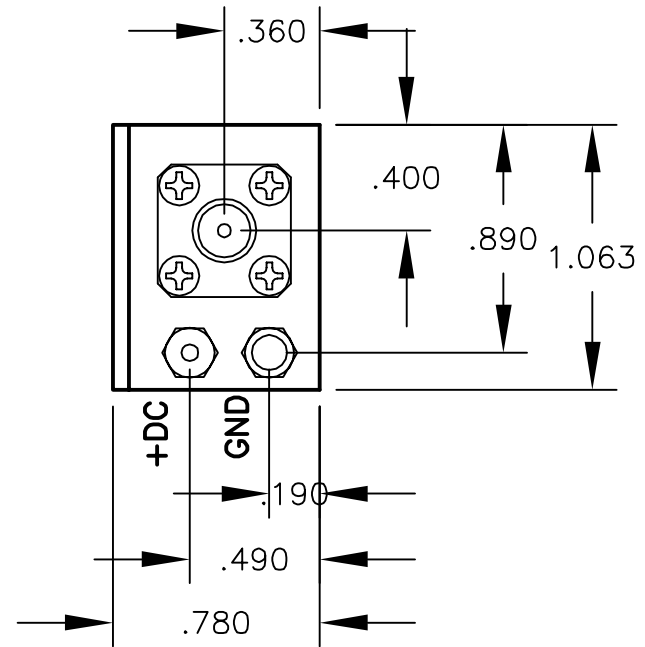
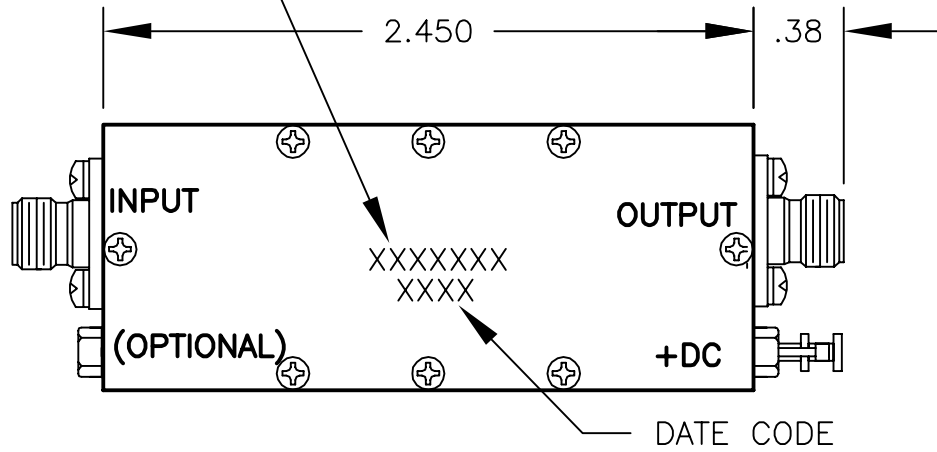


MODEL NO.

OTL2310XXXX

REVISIONS

LTR	DESCRIPTION	DATE	APPROVED
--	ECN 11XXX, RELEASE	8/27/03	RA 8/27/03



CAUTION
 THIS ASSEMBLY CONTAINS PARTS SENSITIVE TO DAMAGE BY ELECTRO-STATIC DISCHARGE (ESD). USE ESD PRECAUTIONARY PROCEDURES WHEN TOUCHING, REMOVING OR INSERTING.

MATERIAL:	DRAWN	DATE	2707 BLACK LAKE PLACE, PHILADELPHIA PA. 19154
	ADAM SIDLE	8/27/02	
FINISH NONE	CHECKED	DATE	OUTLINE DRAWING H-4
	ARR	8/27/02	
DIMENSIONS: INCHES TOLERANCE	ENGINEERING	DATE	CODE IDENT NO. 60979
	MANUFACTURING	DATE	
DEC. .XX +/- .01	QUALITY	DATE	OTL 2310XXXX
.XXX +/- .005	RA	8/27/02	
ANG .X DEG			K:\ENGINEER\ACLTWIN\OLT\OTL_H4
			SHT 1 OF 1