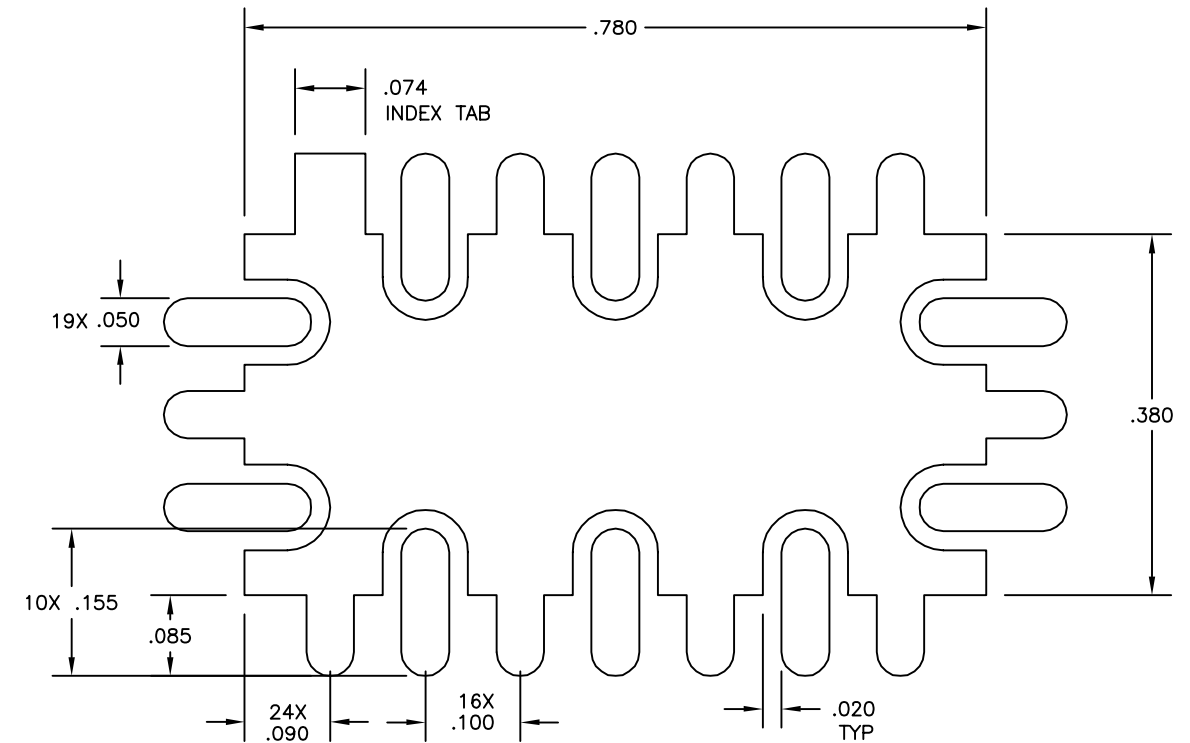
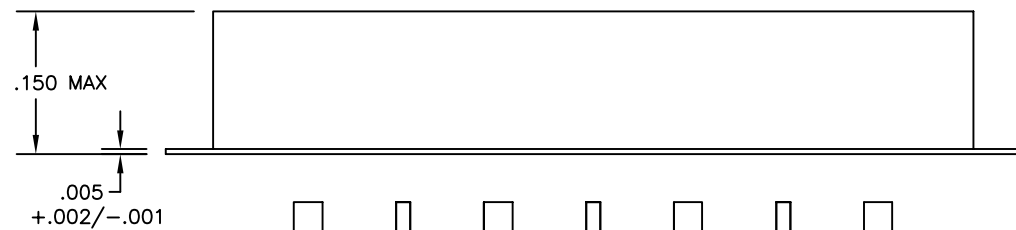
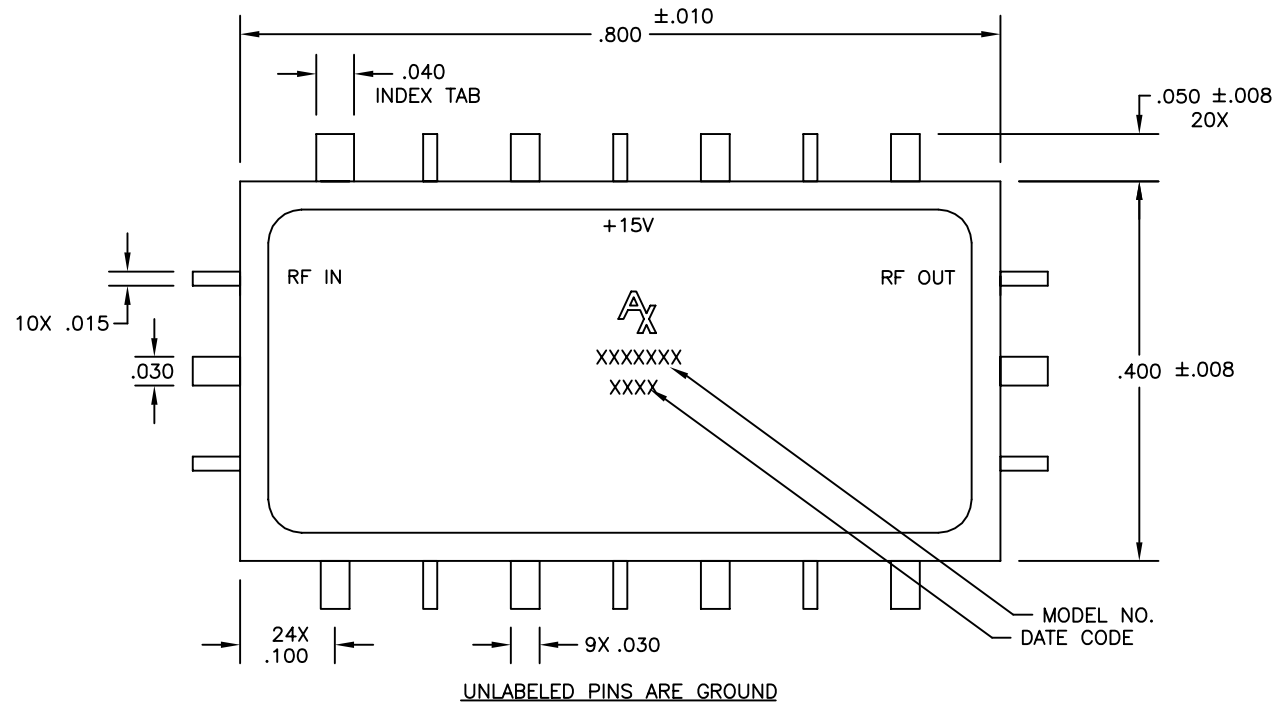


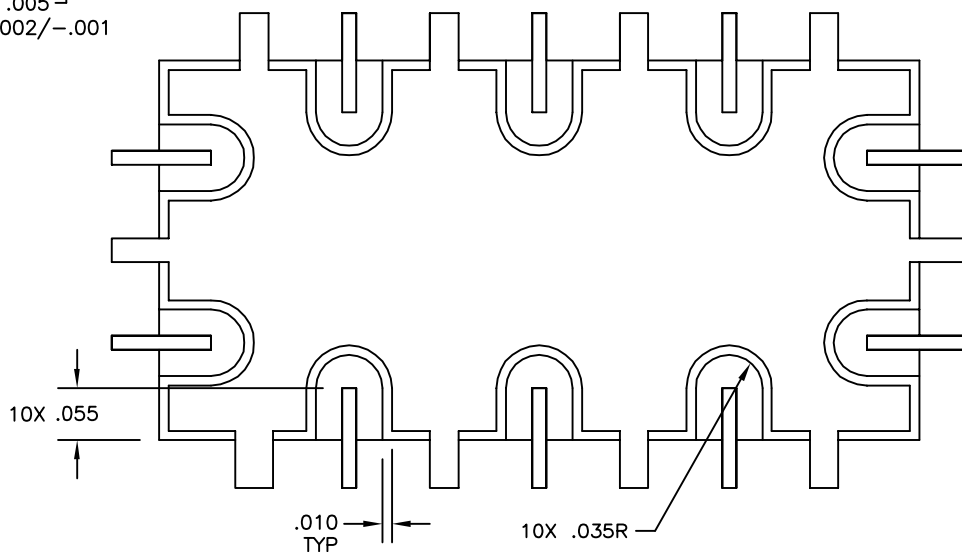
OTL 29200008

REVISIONS

LTR	DESCRIPTION	DATE	APPROVED
-	ECN 10897, RELEASE	8/10/01	
A	ECN 13009, ADDED RECOMMENDED FOOTPRINT	6/23/04	




RECOMMENDED FOOT PRINT PATTERN



CAUTION



THIS ASSEMBLY CONTAINS PARTS SENSITIVE TO DAMAGE BY ELECTRO-STATIC DISCHARGE (ESD). USE ESD PRECAUTIONARY PROCEDURES WHEN TOUCHING, REMOVING OR INSERTING.

MATERIAL:	DRAWN ADAM SIDLE 8/10/01	DATE 8/10/01	 PHILADELPHIA OPERATIONS 2707 BLACK LAKE PLACE PHILADELPHIA PA 19154 (USA)
FINISH:	CHECKED	DATE	
DIMENSIONSTIONS: INCHES	ENGINEERING	DATE	OUTLINE DRAWING SM-4 PACKAGE
TOLERANCE	MANUFACTURING	DATE	
DEC. .XX +/- .01	QUALITY	DATE	CODE IDENT NO. 60979
ANG .X° +/- 3°			OTL 29200008
			K:\ENGINEER\ACTWIN\OUT\SM_4
			SHEET 1 OF 1