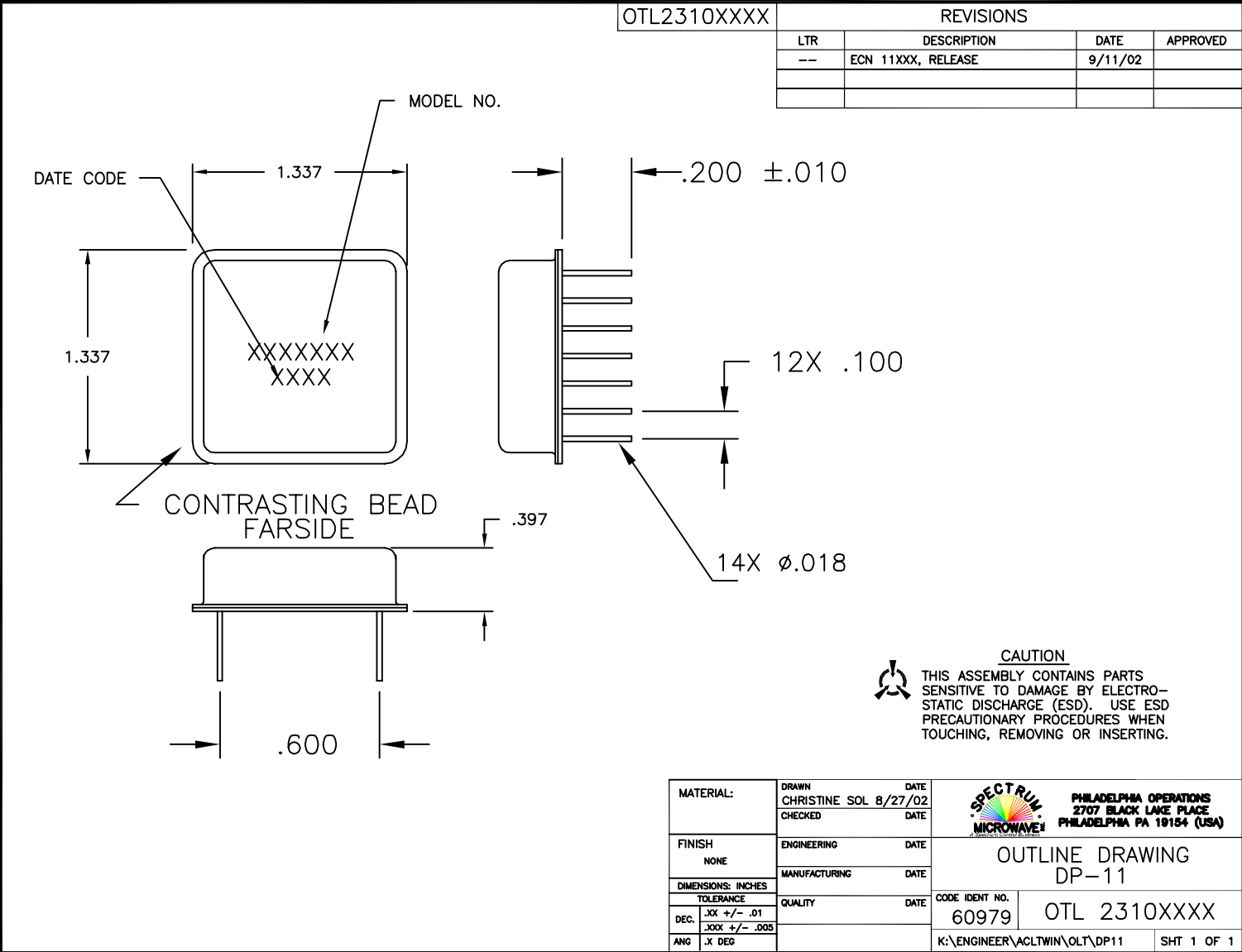


OTL2310XXXX

REVISIONS

LTR	DESCRIPTION	DATE	APPROVED
--	ECN 11XXX, RELEASE	9/11/02	



CAUTION
 THIS ASSEMBLY CONTAINS PARTS SENSITIVE TO DAMAGE BY ELECTRO-STATIC DISCHARGE (ESD). USE ESD PRECAUTIONARY PROCEDURES WHEN TOUCHING, REMOVING OR INSERTING.

MATERIAL:	DRAWN CHRISTINE SOL	DATE 8/27/02
	CHECKED	DATE
FINISH NONE	ENGINEERING	DATE
DIMENSIONS: INCHES	MANUFACTURING	DATE
TOLERANCE	QUALITY	DATE
DEC. .XX +/- .01		
.XXX +/- .005		
ANG .X DEG		



PHILADELPHIA OPERATIONS
 2707 BLACK LAKE PLACE
 PHILADELPHIA PA 19154 (USA)

OUTLINE DRAWING
 DP-11

CODE IDENT NO.	60979	OTL 2310XXXX
K:\ENGINEER\A\LTWIN\OLT\DP11		SHT 1 OF 1