

PRODUCT LINE CARD

Board Mount EMI Filters

Spectrum Control is the leader for application EMI protection solutions. Offering the industry's most extensive line of EMI filters for high reliability, demanding, crucial environmental applications. Commercial aviation and avionics, high-reliability power supplies, as well as all airborne, ship, or ground-based military applications.

Board mount EMI filter designs are built in accordance with MIL-PRF-28861 and MIL-PRF-15733 standards with custom-designed EMI filters available.

Power Surface Mount (PSM) EMI Filters



Revolutionary EMI filters with high temp construction with higher working voltage than other surface mount packages

- Current rating: 20 amps
- Circuit configurations: C & Pi available
- Packaged in tape and reel or bulk form
- Operating temperature ranges of -55°C to +125°C
- Lead-free/RoHS compliant

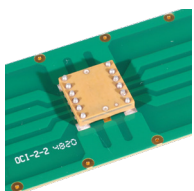
Surface Mount Hi-Rel & Space-Grade EMI Filters



Expanded PSM series to include more stringent levels of testing by employing higher grade of dielectric materials to facilitate military and space applications

- Voltage rating from 200VDC/130 AC, 400 Hz, 700 DWV, -55 to 125°C
- Current rating: 15 Amps (C) max, 10 Amps (Pi) max
- Capacitor: TC=X7R (BR), DF 4% max
- Integrates MIL-PRF-28861 design considerations
- Extended thermal shock and voltage conditioning
- Space-saving, compact design with secured ferrite

Multi-line Surface Mount EMI Filters



Provide exceptional EMI protection for signal and power lines in an integrated surface mount package by providing filtered signal lines between system modules

- Reduce or eliminate the need to assemble filters at bulkhead
- Economical method to meet EMC requirements
- Improve reliability, every filter is 100% tested for key parameters
- Superior performance to chip level solutions
- Easy connection and installation
- Peak temperature +260°C for IR and FC reflow systems



Three Terminal Chips

Compact package for use in cellular, telecommunication, and computer applications

- Non-polar and surface-mountable
- Ability to withstand transient voltages and surge
- Available in 0603, 0805, 1205, and 1806 body size
- Lead-free/RoHS compliant



Surface Mount EMI Filter Arrays

Incorporates (4) three-terminal chips in one compact footprint

- Structured to minimize the residual inductance and ensure large insertion loss in the wideband
- Designed to control cross-talk
- Non-polar and surface-mountable
- Lead-free/RoHS compliant



Solder-in EMI Filters

Solder-in EMI filters are ideal for critical areas where space prevents the use of mounting tools or hardware

- Widest variety of lead configurations and custom packages
- Voltage ratings to 750 VDC
- Multiple circuit configurations: C, L, & Pi available
- High-temperature construction to prevent reflow during installation
- MIL-PRF-15733 QPL versions available



Miniature Solder-in EMI Filters

Ideal for microwave applications such as attenuators and oscillators

- Circuit configurations: C & L
- 0.120" and 0.156" diameter mounting
- Voltage Rating to 200 VDC/115 VAC 0-400 Hz
- Hermetically sealed on one end allows for through-hole sealing, reverse seal available
- High-purity gold plating provides excellent compatibility with gold bonding techniques



Large Diameter, High Temperature Solder-in EMI Filters

EMI filter in higher current, high temperature package

- 0.400" diameter mounting
- Voltage Rating to 200VDC or 125VAC/400Hz, 15 amp current rating
- High temperature construction withstands 300°C installation temperatures
- Ideal for low to medium impedance circuits where large amounts of capacitance to ground can be tolerated (feed-thru "C" circuit)

Spectrum Control's customers benefit from unparalleled engineering and industry expertise. We provide complete standard and custom solutions in a timely manner. Our in-house machining, state-of-the-art engineering, and technology integration provide for rapid turn-around from prototype to production.