

DC BLOCKING TERMINATION 100 KHz - 50 GHz SMPM 1/2 WATT



MODELS: 8541-MPF

SPECIFICATIONS:

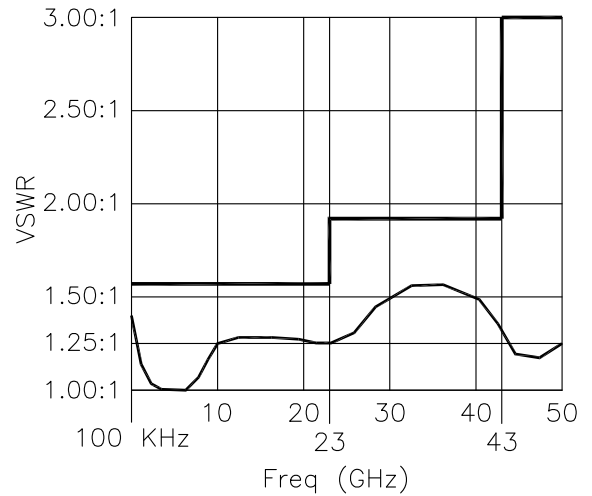
Electrical:

Frequency Range _____ 100 KHz - 50 GHz
 VSWR
 100 KHz - 23 GHz _____ 1.57:1 Max. (-13dB Return Loss)
 23 - 43 GHz _____ 1.92:1 Max. (-10dB Return Loss)
 43 - 50 GHz _____ 3.00:1 Max. (-6dB Return Loss)
 Input Power _____ 1/2 Watt Avg.
 Impedance _____ 50 Ohms
 Voltage Rating _____ 10 Volts Max DC
 Operating Temp. Range _____ -65°C to +125°C

Mechanical:

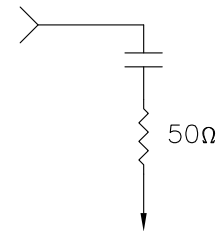
SMPM Connectors _____ Gold Plated Beryllium Copper
 Mates with MIL-STD-348 & GPPO™ Connectors
 Conductors _____ Gold Plated Beryllium Copper
 Housing _____ Gold Plated Beryllium Copper

TYPICAL PERFORMANCE
VSWR vs FREQUENCY

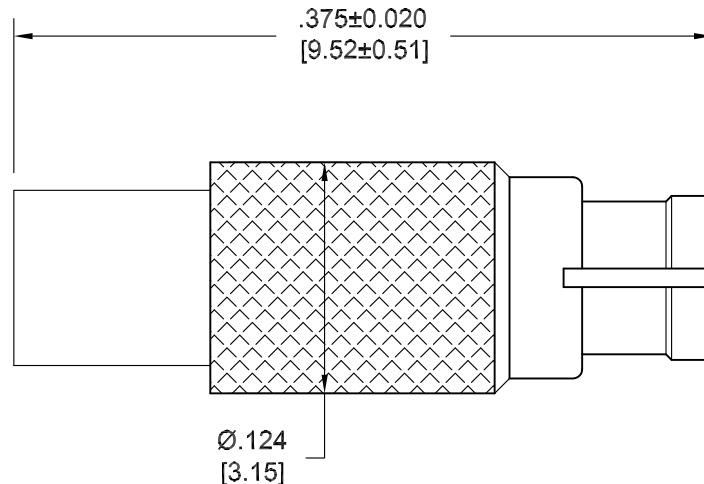


*GPPO is a trademark of Gilbert Engineering Co., Inc.

Model Number: **8541-MPF**



SCHEMATIC DIAGRAM



Note: Dimensions in Brackets are Expressed in Millimeters and are for Reference Only.
 Design specifications are subject to change without notice.
 Contact factory for technical specifications before purchasing or use.